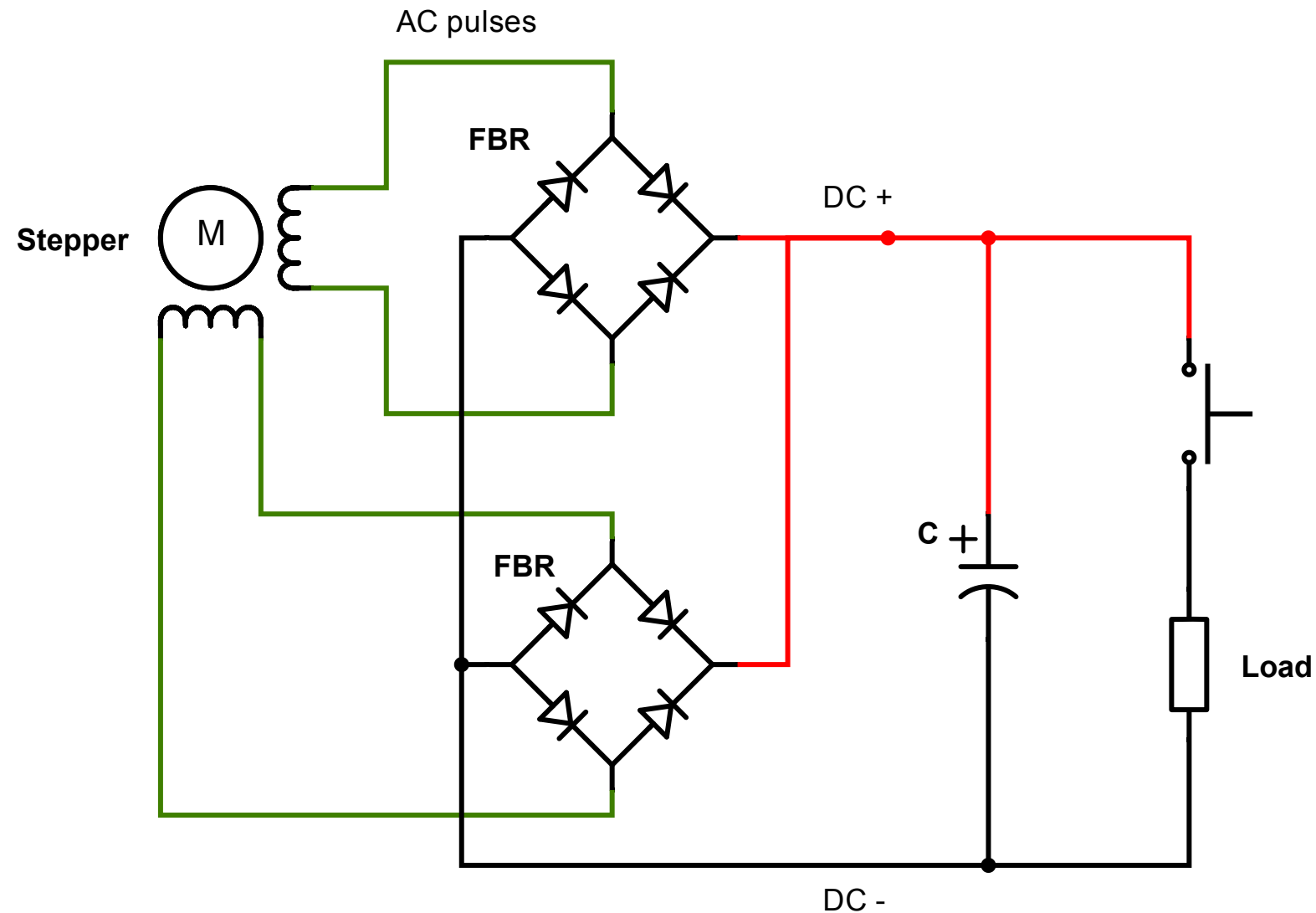
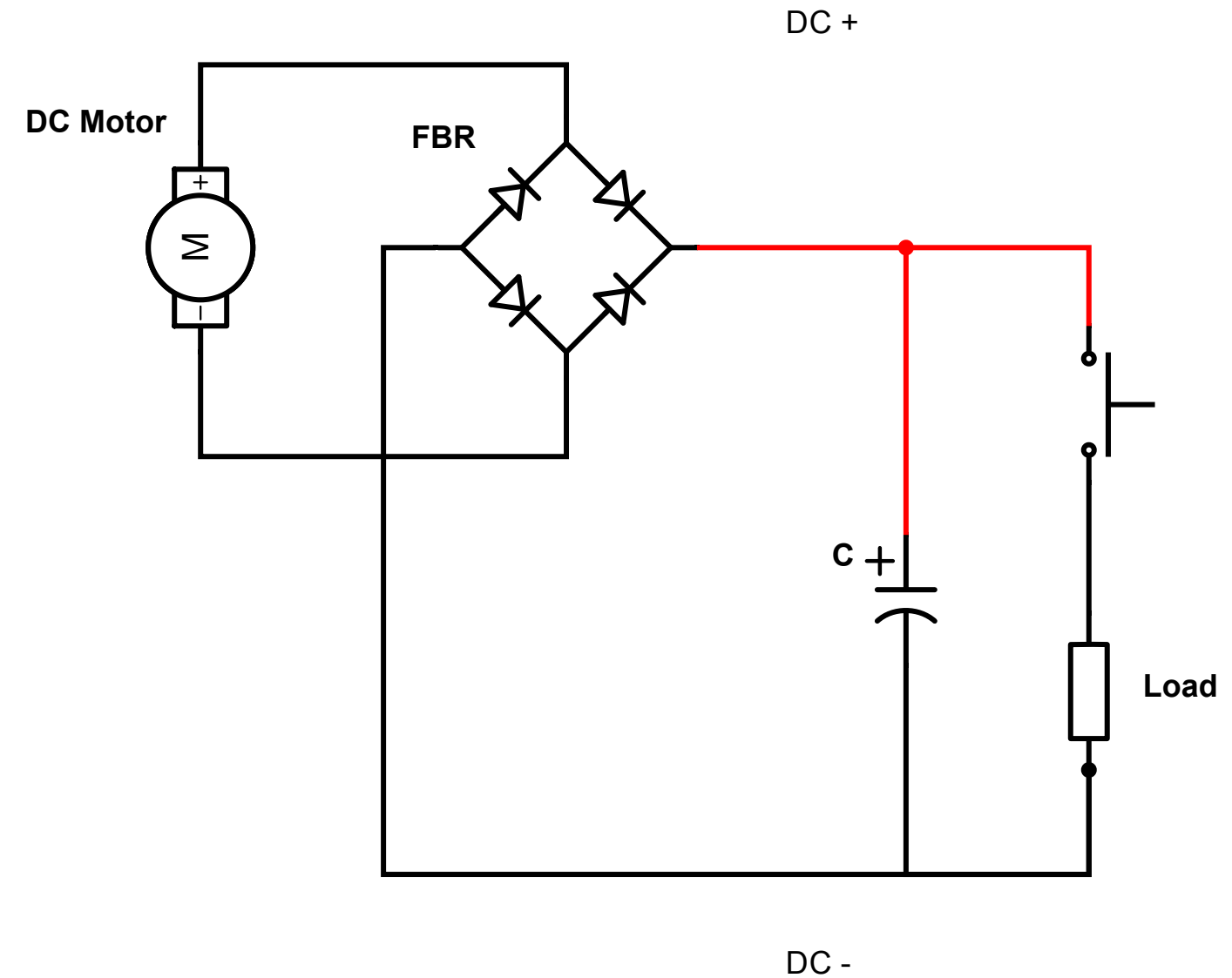


# Stepper Motor



# DC Gearmotor



## Rectify and condition

Four diodes can be arranged to form a "full bridge rectifier", which changes AC to DC.

These can be used with stepper motors, which inherently generate AC pulses; and with DC motors which could generate DC of changing polarity depending on the direction they are spun.

The resulting DC can be connected to a capacitor. Depending on the size of the capacitor, it may smooth the DC output or store energy.

The DC output can power a load, with or without a capacitor. It may need further conditioning, for example if the voltage needs to be regulated for a specific DC load.